

A few examples of our customers

**Airport**  
Changi Airport (Terminal 1)  
Singapore



**Hotel**  
Hyatt Regency Paris  
France



**Educational Institution**  
Edith Cowan University  
Australia



**Museum**  
California Academy of Sciences  
USA



**Retailer**  
Carrefour  
France



**Hospital**  
Aizawa Hospital  
Japan



**Retailer**  
Costco Wholesale Corporation  
USA



**Educational Institution**  
Sheffield University  
UK



**Office Building**  
Shanghai World Financial Center  
China



“Jet Towel” is a trademark of Mitsubishi Electric Corporation.

More case studies on the Jet Towel App!  
The Jet Towel App contains product information,  
a cost estimation tool, and much more!

Mitsubishi Electric Hand Dryer website  
<http://www.JetTowel.ca>



<https://itunes.apple.com/ae/app/mitsubishi-jet-towel-app/id1091122605?mt=8>



HAND DRYER

**Jet Towel™**

Drying hands more quietly, more quickly  
and with less energy since 1993.




SMART SERIES NEW



NEW 9TH GENERATION  
SLIM SERIES

\* NSF certified models:  
JT-SB116JH2, JT-S1AP  
and JT-MC106G



for a greener tomorrow 

# Mitsubishi Electric

## Over 90 years of excellence

From pushing the limits of precision in microelectronics to producing cutting-edge satellites, Mitsubishi Electric has built a reputation as an innovator of key technologies and for use in outer space achieved amazing technological feats in a wide range of fields. With nearly a century's worth of experience coupled with a philosophy of uncompromising quality, Mitsubishi Electric is the company to count on.

### Just a few of our achievements

**Power Semiconductors**

DIPIPMs are compact power semiconductors that realize dramatically enhanced efficiency. Used in home appliances and other diverse applications, they contribute to significant energy savings.

**Large-scale, High-purity Plastic Recycling**

Our recycling technologies recover up to 70% of plastic for use in new products. Typically, only about 6% is recoverable.

**Compact EV motor drive systems**

Our 60kW electric vehicle (EV) motor drive prototype, with a reduced cubic volume of 14.1 liters, is the smallest in its class.

**Hole-piercing Laser-processing Technologies for Printed Circuit Boards**

High-speed, precise laser processing enables printed circuit boards to be pierced at 4,500 holes per second; an FA technology supporting the evolution of smartphones.

**Transforming Equipment Development Technologies**

We verify the reliability of our transforming equipment by simulating severe natural environments, including extreme cold/heat, lightning strikes and earthquakes at the world's largest testing facilities.

**1921**  
Mitsubishi Electric is branched off from Mitsubishi Corporation as a separate identity

**1928**  
E52, the first large-scale electric locomotive produced in Japan

**1935**  
Commencement of elevator and escalator production

**1953**  
Launched first commercial television

**1964**  
Produced radar equipment for the weather station atop Mt. Fuji

**1980**  
Debut of Diamond Vision display at Dodger Stadium in the United States

**1990**  
Launched world's first commercial car navigation system incorporating GPS

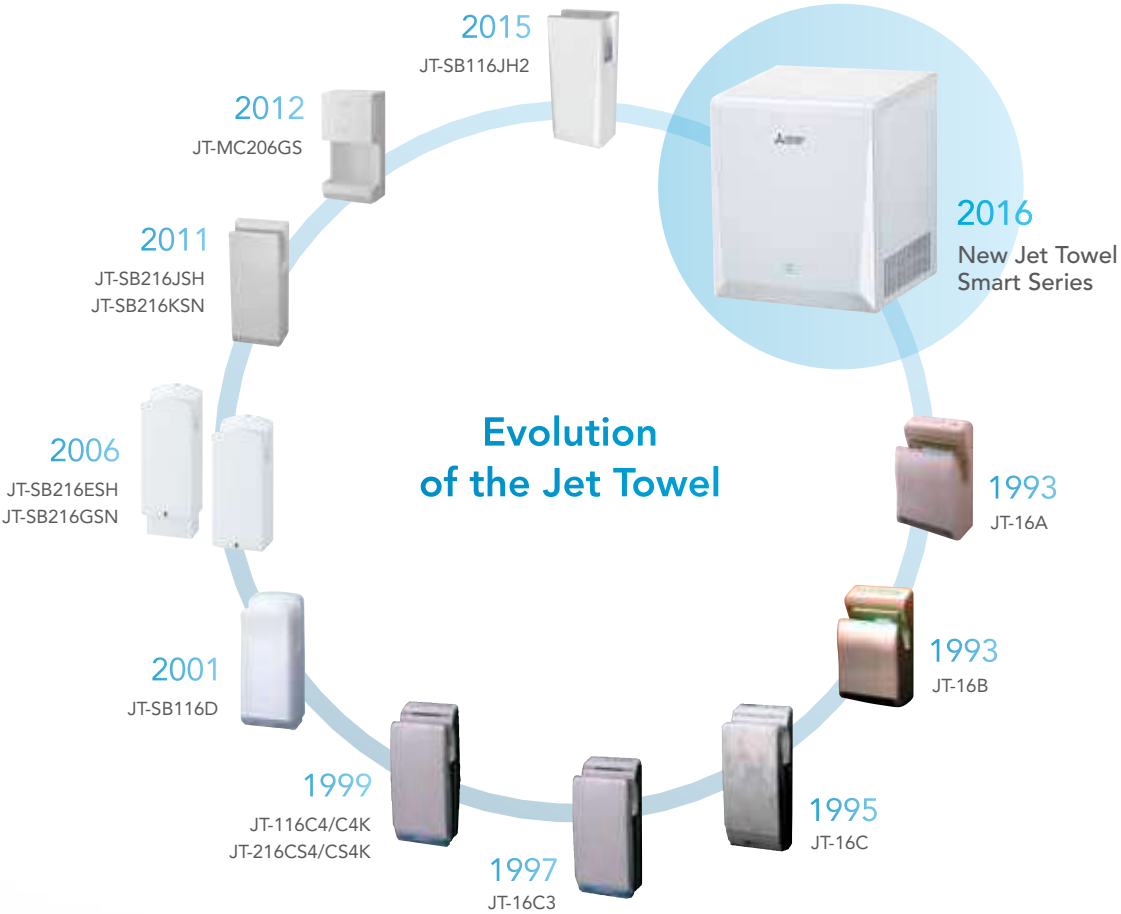
**2000**  
Introduced MISTY® technology as encryption standard for 3rd-generation mobile phones

**2007**  
Completed 173-meter-tall elevator testing tower (world's tallest at the time)

**2008**  
Launched SUPERBIRD-C2, Japan's first domestically produced commercial satellite

**2011**  
Debut of "Hayabusa" Series E5, holder of the Japanese speed record for a train

**2014**  
Unveiled world's largest full ultra-HD video display\* in Times Square, New York City  
\*As of Nov. 18, 2014 (based on total area)



## The World's First High-speed Jet Hand Dryer



The first concept model for the Jet Towel (1992)

In 1992, new advances in compact DC brushless motor technology were developed at the Nakatsugawa Works, a Mitsubishi Electric factory located in Central Japan. While thinking of applications for the new motor, engineers came up with the novel idea of using high-powered jets of air to rapidly blow water off of the hands instead of relying on evaporation like conventional electric dryers. As a result, the Jet Towel was officially released in 1993 and hand drying has not been the same ever since.





## The Greener Choice

Eliminate the Problems  
of Paper Towel Maintenance



## The Performance Pick

Mitsubishi Electric Jet Towels —  
The obvious choice

### Economical

The cost of constantly replacing paper towels each day can be staggering. Because the Jet Towel only uses electricity to operate, operating cost is significantly lower.

# 97%

Approximate reduction  
in running cost

Assumptions: 1. Electricity rate of \$0.13/kWh, 2. 2 paper towels consumed per use, at \$0.01/towel. Excludes cleaning and paper garbage disposal costs.

\*Calculated with JT-SB116JH2 specifications

### Eco-friendly

The Jet Towel does not create any waste, eliminating the trouble of waste disposal and conserving forest resources at the same time. Switching to the Jet Towel sends a positive message to the users about a facility's attitude towards the environment.

# Zero Waste



Eliminate the mess and  
cost of paper towels

### Easy Maintenance

Paper towels need to be constantly refilled and paper garbage removed throughout the day. Jet Towels require minimal maintenance, freeing up service staff to do other important tasks.

### High User Satisfaction

Empty paper towel dispensers and overflowing garbage cans create a negative impression on restroom users. Jet Towels never “run out” and dry hands in about the same amount of time.

## Outstanding Performance

**9-11sec**  
High speed

High-speed settings,  
heater on

**570 w**  
Energy-saving

Standard speed settings,  
heater off

**56 dB**  
Low noise

Standard speed settings

\*JT-SB116JH2 specifications

### Amazingly quick and quiet hand dryers

The noise of a hand dryer can be very distracting, especially in quiet environments such as offices, schools, or hotels. Leave it to Mitsubishi Electric to design products that not only dry hands quickly, but do it quietly as well. Over 20 years of experience, numerous design improvements, and new technological developments have led to the quietest Jet Towels yet. A mere 56dB when using the standard speed setting, the Slim model is even quieter than an average conversation!

### Comfortable use for anyone

People come in all shapes and sizes. From small children and adults to those in wheelchairs, Jet Towels can accommodate any user. Hand drying areas are large and roomy, and air speeds are kept at a reasonable level for comfortable drying. Who would want their hands blown against a dryer wall?

### Energy efficient too!

As the pioneer of high-speed hand drying, Mitsubishi Electric knows that it is not the most energy efficient to focus on only air speed to improve performance. Instead, Jet Towel evolution has proceeded along the more sensible route — researching smarter nozzle designs and striking the right balance between air speed and volume for greater drying efficiency. Throw in the high quality and long reliability that Mitsubishi Electric is known for, and you'll find a no-brainer investment.

# Jet Towel Product Lineup

The product lineup has expanded with the addition of the all-new Jet Towel Smart Series. These hand dryers are compact, durable, and powerful, making them suitable for a wide range of applications. In addition, the original “slim” type has been further improved, for even quieter operation.

From offices and airports to schools and nursing homes, there is a Jet Towel suitable for every restroom.

## New 9th generation dual-nozzle flagship model Jet Towel Slim

with heater  
**JT-SB116JH2**  
White / Silver

- Amazingly quiet at 56dB (operating at standard speed)! 2dB improvement over previous model
- Stronger front and back panels for greater impact resistance



## Compact but powerful, with a protective metal cover Jet Towel Smart

with heater  
**JT-S1AP**  
White / Silver

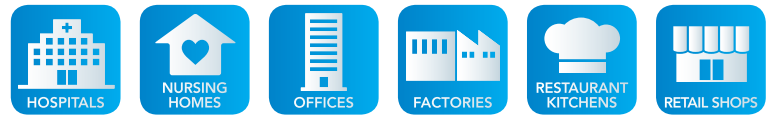
- High-speed drying with low energy use and quiet operation
- Robust, tamper-resistant body
- Quick 0.1sec response time improves user experience



## User-friendly and installs almost anywhere Jet Towel Mini

**JT-MC106G**  
White

- Compact body fits almost any size restroom
- Large drying space and water-catching tray makes it ideal for use by children and people in wheelchairs



Mitsubishi Electric Quality —  
The difference is in the details

Hygienic features

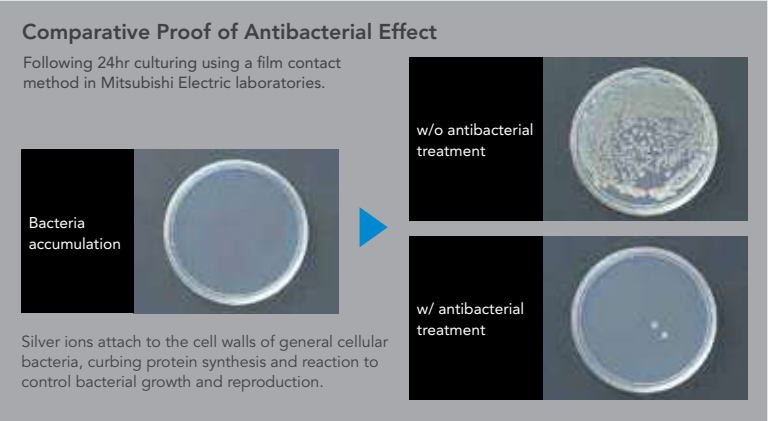
Certified by NSF International

NSF International, an independent third-party public safety health and standards organization, has certified Jet Towels to be compliant to its rigorous requirements (NSF/ANSI 169).



Antibacterial Plastics

The plastics used in Jet Towels curb the growth of bacteria on the surface. The secret is the metal ions added into the resin, which work to inhibit the functions of bacteria and reproductive growth.



No-touch Design

Jet Towels are activated automatically when hands pass through infrared sensors in the spacious drying area. Compared to competitors’ products, Jet Towels are designed with lower airspeeds to avoid blowing users’ hands against the wall of the unit.

Safe for Alcohol Cleaning

Normal plastics react with alcohol, which can result in cracking and damage. Jet Towels use high-grade plastic that can be safely cleaned with cleansers containing alcohol (less than 83% ethanol content).

\*Excluding the front panels of JT-SB116JH2-S-NA and JT-S1AP-S-NA



Mitsubishi Electric quality

High-quality Motor

The high-precision motors used in Jet Towels are developed and manufactured to strict specifications entirely at Mitsubishi Electric. In-house testing results estimate a motor life of over seven years for the Slim, Smart and Mini models.

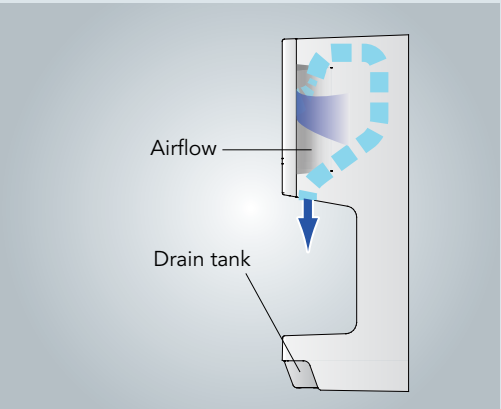
\*Motor life varies with frequency of use. Estimates calculated based on 400 users per day for JT-SB116JH2, 200 uses per day for JT-MC106G, and 200 uses per day for JT-S1AP.



High level of safety

Separated Air Intake

In all models, the air intake is located separately from the output nozzles to reduce the risk of water intake.



Metal Enclosure

High-voltage circuit boards are completely covered by a protective metal enclosure. In the highly unlikely event of a fire occurring, flames are sealed in and cannot spread outside of the barrier.

Fire-resistant Parts

Internal parts are made from flame-resistant UL94V-0 and UL94V-5VA-grade materials to prevent fire.



Temperature and Current Fuses

Multiple fuses located throughout the unit protect the user from over-current and over-heating. Operation is halted instantly if conditions are abnormal.

	NSF certified	Antibacterial plastic	No-touch design	Alcohol-safe	Drain tank	Motor type	Metal circuit board enclosure	Fire-resistant parts	Safety fuses
Jet Towel Slim	●	●	●	●	●	DC brushless	●	●	Thermal fuses / Current fuses
Jet Towel Smart	●	●	●	●		AC commutator	●	●	
Jet Towel Mini	●	●	●	●	●	AC commutator	●	●	



# New 9th Generation Slim Series

The latest evolution of the original dual-jet hand dryer



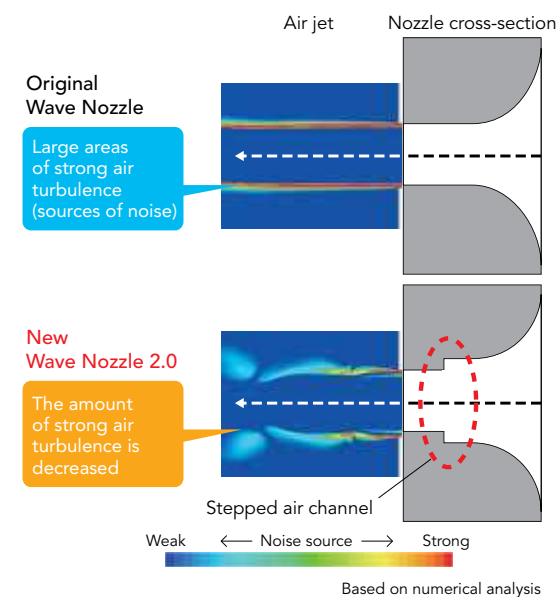
- Antibacterial surfaces\*
- Designed for alcohol cleaning\*
- Quiet operation 56dB
- NEW
- Drain tank
- Dual air nozzles
- Reinforced front and back panels
- NEW
- PTC heater

\* Excluding front panel of JT-SB116JH2-S-NA

## Ultra-quiet operation

### New Wave Nozzle 2.0

The patented wave nozzle has been further improved. Developed from fluid control technology, sound-causing turbulence has been further decreased, achieving a large 2dB reduction in noise.



## Comfortable to use

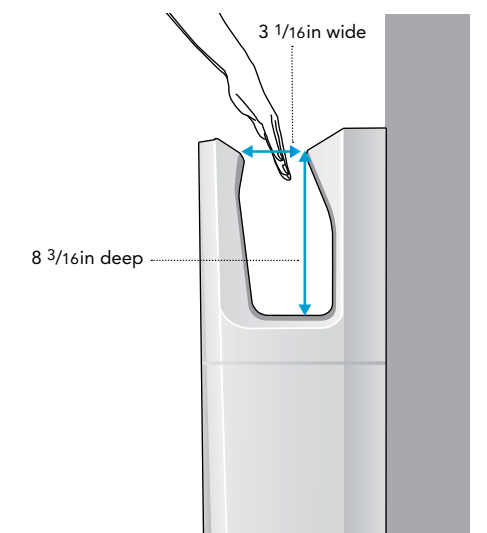
### Large 14.4pt Drying Area

The space to insert hands is a wide 3 1/16in at the narrowest point and 8 3/16in deep. The large drying area makes it easier to dry hands without accidentally touching the unit.

### Child-friendly Design

Alternate child sensors are placed inside of the drying area to detect small hands entering from the sides.

#### Open-side design



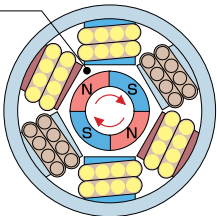
# Long-lasting reliability

## High-efficiency Brushless DC Motor

This high-precision motor is completely developed and manufactured entirely by Mitsubishi Electric. In-house testing results show a motor life of over seven years of use (400 uses per day).

### Brushless DC Motor

Contact-free rotor eliminates wear and tear.



## Reinforced Protective Panels

Newly designed front and back panels make the new Jet Towel Slim more robust and impact-resistant. The panels have been tested to withstand an impact of up to 15J, or the equivalent of dropping a 2.2lb steel ball from a height of approximately 59 1/16in.

# Simplified maintenance

## 1.7pt Drain Tank Keeps Floors Dry



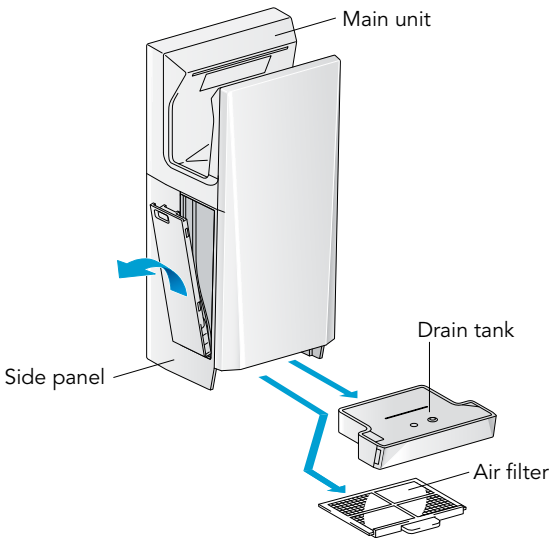
Water blown from hands is caught and channeled into a convenient drain tank for easy removal. It stores up to approximately 800 uses (1.7pt), and requires only periodic emptying and quick rinsing. In the 9th-generation model, the drain tank is the same color as the body, making it less conspicuous to prevent tampering.



A small window indicates the level of water collected.

## Easy Access Air Filter and Drain Duct

The washable air filter and drain duct are easily accessible, making quick and thorough cleaning possible. No tools or time-consuming disassembly required.



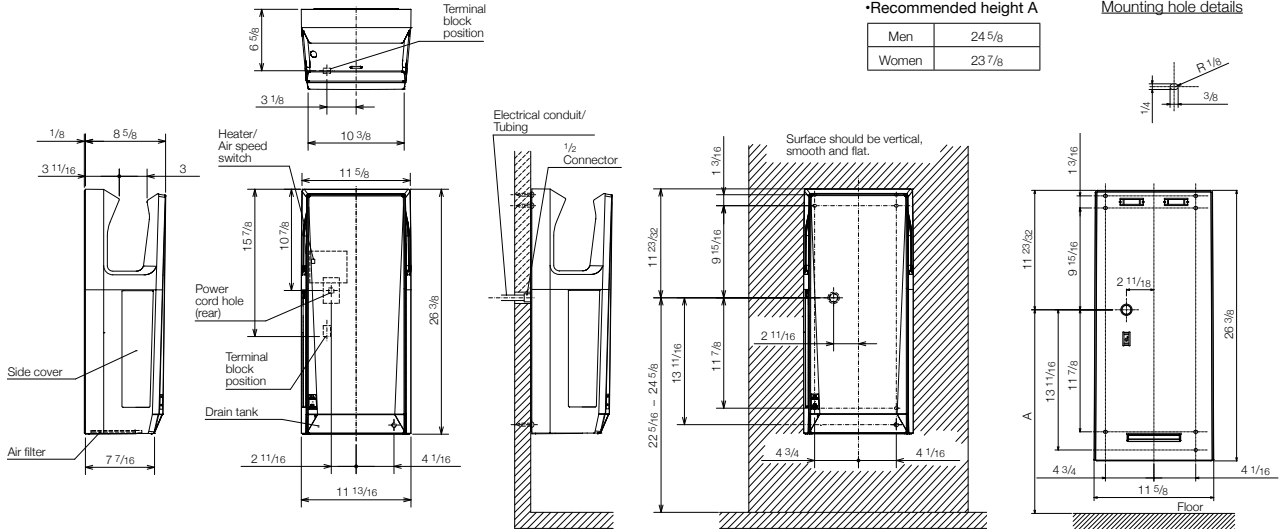
## Specifications

	Power supply	Mode	Heater	Drying time*1 (sec)	Power consumption (W)	Noise*2 (dB)	Motor type	Hygienic features	External dimensions (in)	Weight (lb)	Drain tank (pt)
Jet Towel Slim JT-SB116JH2	120V 60Hz	High	ON	9-11	1250	59	Brushless DC	- Antibacterial surfaces - NSF certification - Alcohol-cleanable	Width: 11 13/16 Depth: 8 5/8 Height: 26 3/8	26.5	1.7
			OFF	11-13	730						
		Standard	ON	11-13	1070	56					
			OFF	13-15	570						

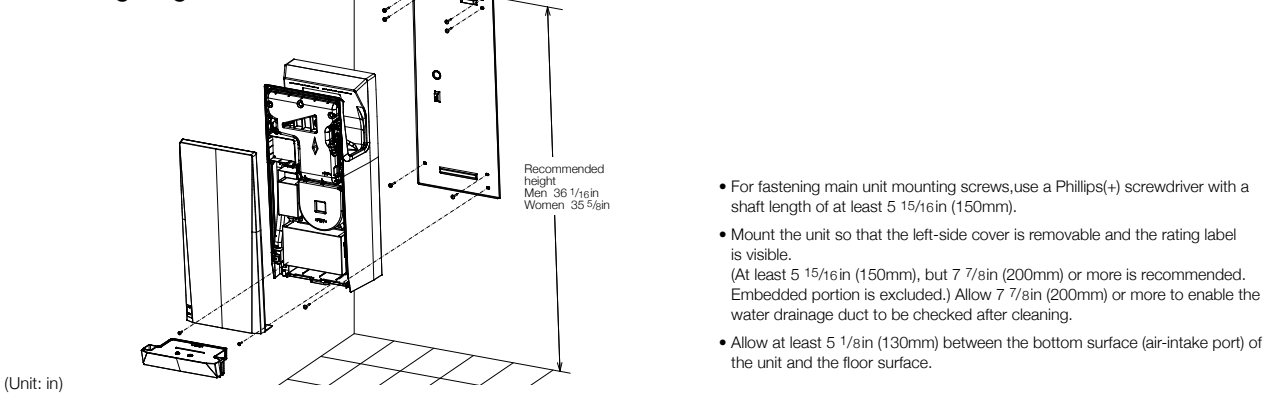
\*1 Time needed to reduce remaining water to 50mg or less per hand (in-house study).

\*2 Measurements made in anechoic chamber at a distance of 78 47/64in.

### Dimensions



### Mounting Diagram





# Jet Towel Smart

## Smarter drying — Industry Top-class Drying Performance and Energy Efficiency

The engineers at Mitsubishi Electric have simultaneously achieved amazing 8-11sec drying performance and the lowest power consumption in Jet Towel history.

	Jet Towel Slim	Jet Towel Mini	Jet Towel Smart
Energy consumption (Per 100 uses)	0.31 kWh	0.27 kWh	0.23 kWh

\*Energy consumption calculated with the following assumptions: input voltage of 120V, heater on, and at high power settings. Standby power consumption not included in calculation.

## Tough exterior

The protective steel outer shell and ABS plastic body are designed to take quite a beating. They have been tested to withstand 15J, which is more than two times the energy of an average impact\*. The IPX-3 rating for water resistance means that it is also protected against water infiltration from spraying water.

\*Mitsubishi Electric estimates



\*The above image is for illustrative purposes only. For your safety, please do not attempt to damage the product.



- Antibacterial surfaces\*
- Designed for alcohol cleaning\*
- Robust design
- Quick start 0.1sec response
- Protective steel shell
- PTC heater

\* Excluding front panel of JT-S1AP

## Comfortable to use

### Large Drying Area

With 5 13/64in between the air nozzles and the wall, there is even more than enough space for large hands to dry comfortably.

### 0.1sec Quick Response

Optimized hand sensors quickly react to users' input for a more positive user experience. It takes less than 0.1sec for the unit to detect hands and begin dispensing air.

### 5 15/16in Wide Nozzle

The wide nozzle spreads airflow across a large area, enabling both hands to be covered at the same time.





# Other smart features

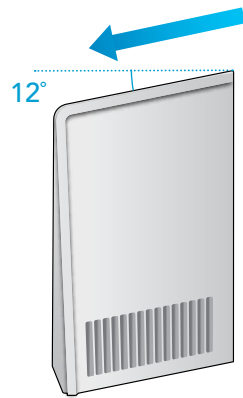
## Easy Air Filter Maintenance

The air filter is important as it prevents excess dust and dirt from accumulating inside of the unit. The filter is placed conveniently right up against the side of the intake grill, allowing for quick cleaning without any disassembly required!



## Smart Tilted Roof Design

The top of the Jet Towel Smart is tilted at a 12° angle to prevent users from leaving unwanted trash and other objects on the unit.



## Customized color options available

Jet Towel Smart is available in customized colors for large orders. Your logo can also be added to give each unit a signature look. It's a great way to boost awareness and promote your business.

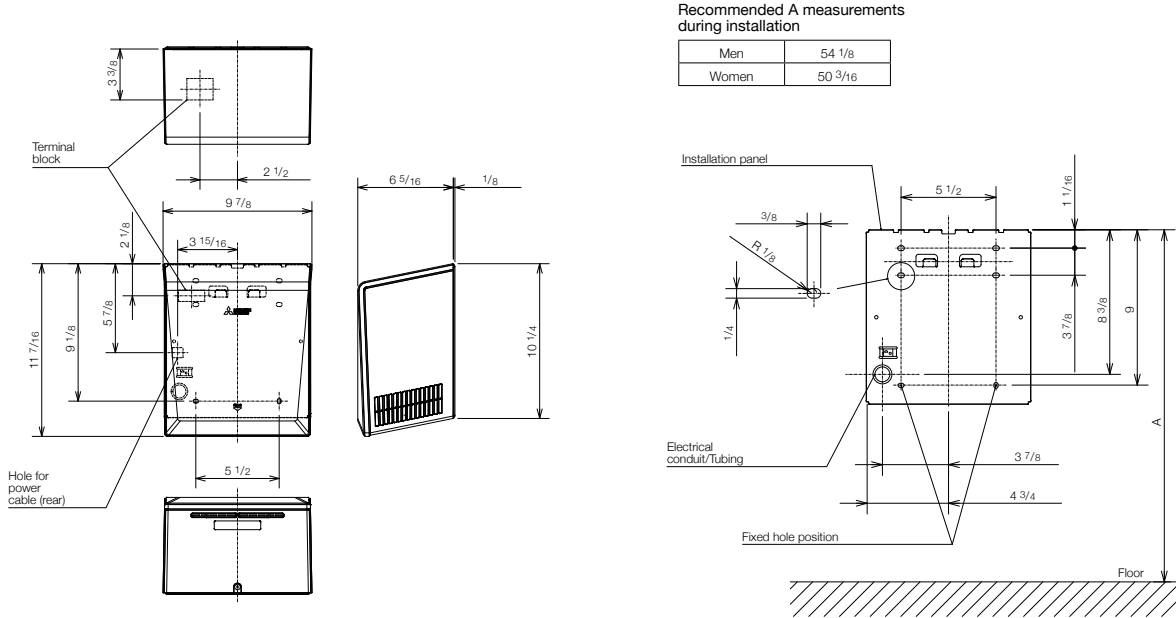


## Specifications

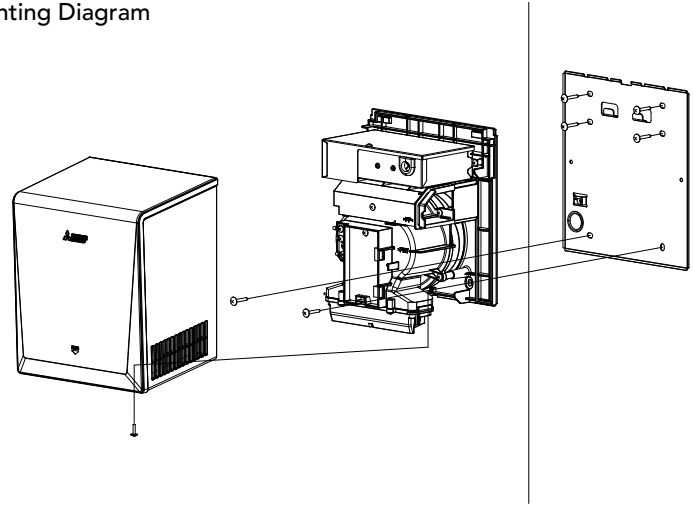
	Power supply	Heater	Drying time* <sup>1</sup> (sec)	Power consumption (W)	Motor type	Noise* <sup>2</sup> (dB)	Hygienic features	External dimensions (in)	Weight (lb)
Jet Towel Smart JT-S1AP	120V 60Hz	ON  OFF	9  10	1020  730	Commutator motor	62	- Antibacterial surfaces - NSF certification - Alcohol-cleanable	Width: 9 7/8 Depth: 6 5/16 Height: 11 7/16	11

\*1 Time needed to reduce remaining water to 50mg or less per hand (in-house study).  
\*2 Measurements made in anechoic chamber at a distance of 78 47/64 in.

### ■ Dimensions



### ■ Mounting Diagram



(Unit: in)

• Please ensure that both sides of the unit are at least 3 15/16 in (100mm) from all obstacles, including the wall.

## Jet Towel Mini



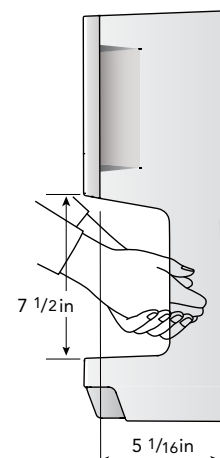
User-friendly Compact Model



## Easy to use, for everyone

### User-friendly Design

In addition to the large 11pt drying area, the Jet Towel Mini features a water-catching tray and drain tank. Small children and people in wheelchairs will especially appreciate how the design prevents water escaping from the unit during use.



## Fits almost anywhere

### Perfect for Smaller Restrooms

Taking up a space of only 9 7/8in x 18 7/8in on the wall, the Mini can be installed in tight spaces, and even over counters and sinks.

### Installable on Standard Walls

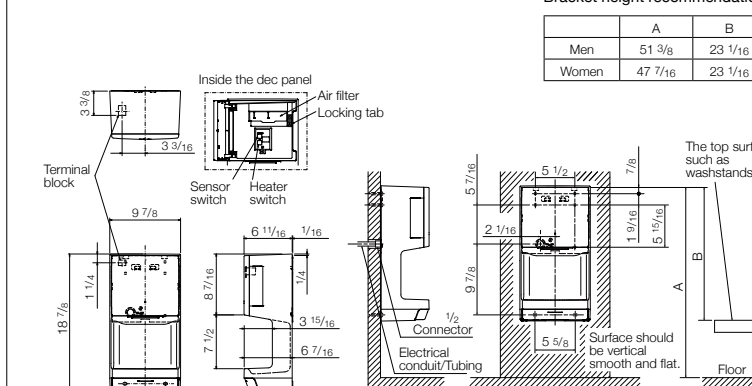
Jet Towel Mini can be installed on walls that are not treated for waterproofing. Since the water is contained within the unit, the risk of water damage to the building is greatly reduced.



## Specifications

	Power supply	Heater	Drying time (sec)	Power consumption (W)	Noise (dB)	Motor type	Power cord	External dimensions (in)	Weight (lb)	Drain tank (pt)
Jet Towel Mini JT-MC106G	120V 60Hz	ON	13	890	64	Commutator motor	None (terminal block connection)	Width: 9 7/8 Depth: 6 11/16 Height: 18 7/8	11.5	1.3
		OFF		600						

### ■ Dimensions



(Unit: in)

- Please ensure that the left side of the unit is at least 3 15/16in (100mm) from all obstacles, including the wall.
- Please ensure that there is more than 5 15/16in (150mm) of space on the right side of the unit so the rating label can be read.

### ■ Mounting Diagram

